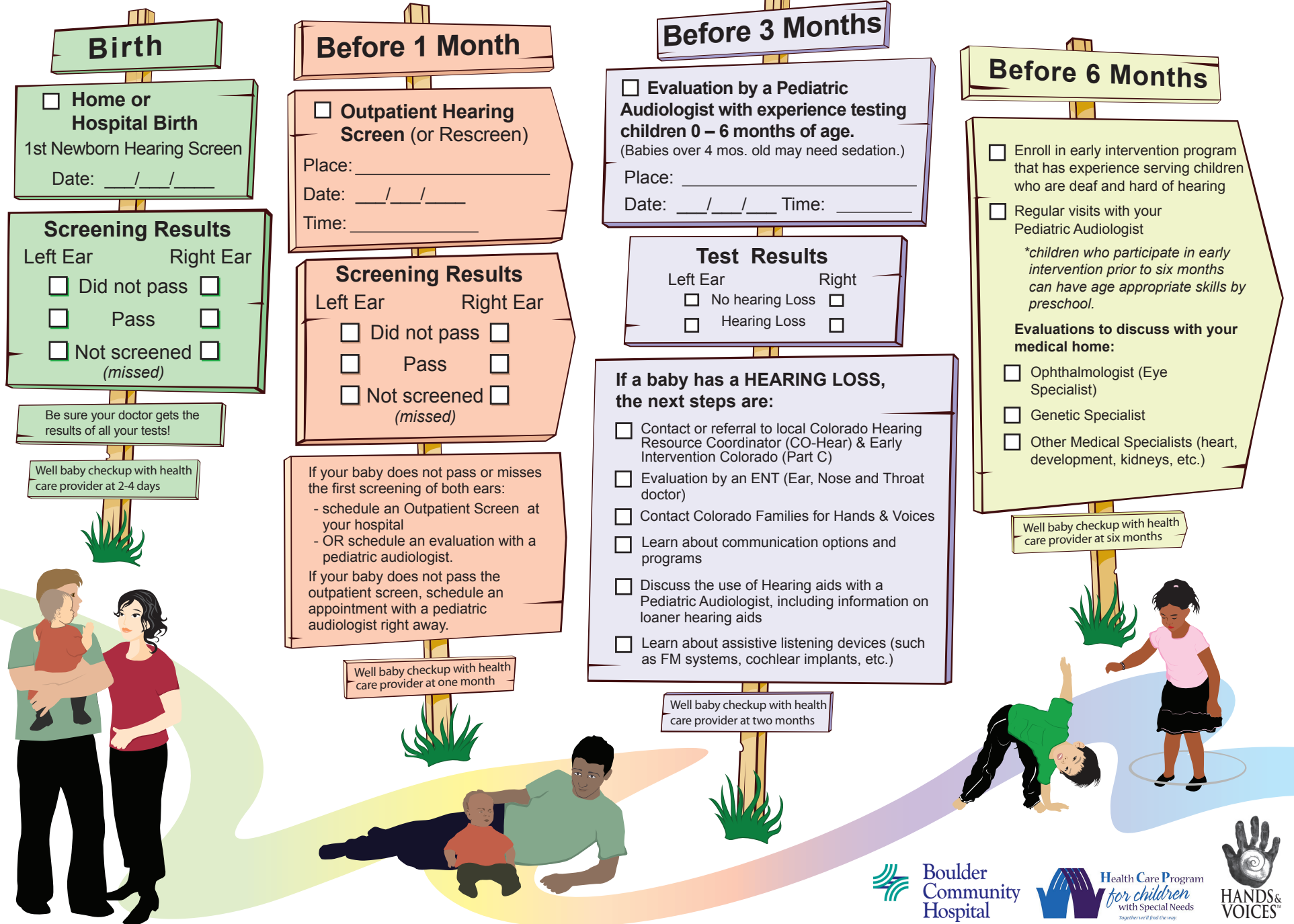


Colorado Infant Hearing Program – A Roadmap for Families

Child's Name: _____

Child's Date of Birth: ____ / ____ / ____



Local and Regional Resources

Hospital Coordinator

- Amy Lears, Boulder Community Hospital Audiology Department, 311 Mapleton Ave, Boulder Co, 80304
303-441-2117 alears@bch.org
- To schedule an outpatient screen or rescreen: 303-938-3368

Pediatric Audiologist:

- Boulder Community Hospital Audiology Department, 311 Mapleton Ave., Boulder CO 80304
303-441-0596
- The Children's Hospital, 13123 East 16th Avenue, Aurora, Co 80045,
720-777-6801 - Satellite clinics in Wheatridge, Thornton, Littleton
- University of Colorado Hospital, Anschutz Outpatient Pavilion, 1635 Aurora Court, Aurora, CO 80045
720-848-2800

CO-Hear (Colorado Hearing Resource Coordinator):

- Cynthia Hunnicutt, 303-520-4907

Health Care Program for Children with Special Needs (HCP) Regional Audiologist:

- Sally Specht, 303-775-4420

HCP Regional Office and Team Leader:

- Linda Sobeck, 303-678-6137

Hands & Voices Regional Parent Guide:

- Julie McClosky, 303-683-2583

Early Intervention Colorado:

- Imagine! - Joan Holtz 303-457-5650

Statewide Resources

- Health Care Program for Children with Special Needs: www.HCPColorado.org
- Colorado Families for Hands & Voices: (Parent Funding Toolkit, Parent Stories, Colorado Resource Guide) 303-492-6283, www.cohandsandvoices.org
- Colorado Home Intervention Program: <http://tinyurl.com/cbd5ln>
- Early Intervention Colorado, Services for Children Birth to Three: <http://www.eicolorado.org/>

National Resources

- www.babyhearing.org: Boys Town National Research Hospital informational site for parents
- Early Hearing Detection and Intervention Program, Centers For Disease Control website: www.cdc.gov/ncbddd/ehdi
- National Center for Hearing Assessment & Management: www.infanthearing.org
- Hands & Voices: www.handsandvoices.org
- Alexander Graham Bell Association for the Deaf/Hard of hearing: www.agbell.org
- American Society for Deaf Children, www.deafchildren.org